

142 mm Continuous Filter Holder



Features

- Enables continuous sample feeding for larger volume. No more repetitive pouring tasks.
- Equipped with sinker that misses no drops till the ends.
- Stainless steel construction is durable and reusable.
- Two-Year Warranty

Applications

Large-volume liquid purification and filtration, such as medium purification, wine filtration, etc.

Specification

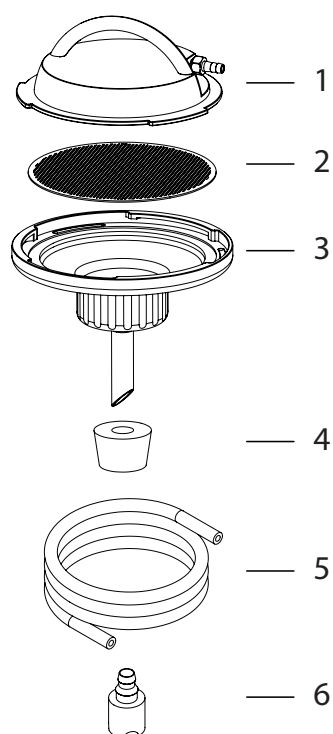
Material	SFC 142
Cover	SS304
Support base	SS304
Membrane support	SS304
Inlet hose barb	SS304
Tube	Silicone
Sinker	SS304

Specification

Filter diameter	142 mm
Effective filtration area	124.6 cm ²
Inlet hose barb	ID8
Flask capacity	-

Ordering Information

SFC 142, Continuous Filter Holder		180200-S1
1	Stainless steel cover	180200-11
2	Stainless steel support screen, 142 mm	180200-31
3	Stainless steel support base, 142 mm	180200-00
4	Silicone stopper (No.8)	167110-16-1
5	Silicone tube, Ø 8 x 14 mm, 200 cm	180300-68
6	Stainless steel sinker	180200-32
Optional		
	GL45 filtration adaptor	197100-65
	Laboratory glass bottle, 10 L	197000-69
	Laboratory glass bottle, 20 L	197000-70
	PALL Supor™ PES membrane disc filters, 142 mm, 0.2 µm, tabbed, 25/PK	201PAL60305
	PALL Nylaflo™ Nylon membrane disc filters, 142 mm, 0.2 µm, 25/PK	201PAL66604
	RONE PES membrane, 142 mm, 0.2 µm, 50/PK	201PES-142-022-50
	RONE Nylon membrane, 142 mm, 0.2 µm, 50/PK	201NY-142-022-50
	Rocker 400 - SFC 142, Continuous Vacuum Filtration System, AC110V, 60Hz (AC220V, 50Hz)	167405-11(22)



SFC 142