

90 mm Glass Filtration Apparatus



Features

- Filter and store directly in GL45 bottles with equipped adaptor. No more cross-contamination.

Applications

Purification of organic, corrosive liquid such as solvent, mobile phase for HPLC, GC and AA analysis.

* Membrane support of VF 15 is made of stainless steel and may not be resistant enough to strong acids. Please refer to chemical compatibility chart if required.

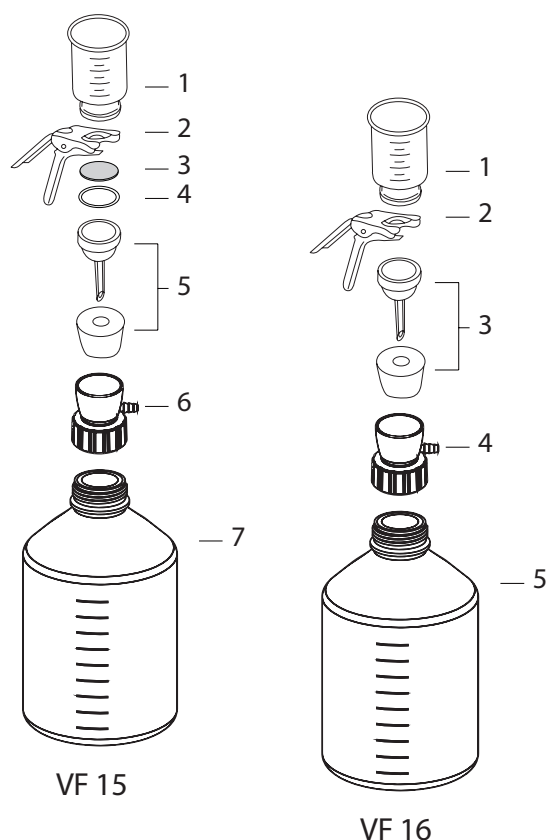
Specifications

Material	VF 15	VF 16
Funnel	Borosilicate glass	Borosilicate glass
Support base	Borosilicate glass	Borosilicate glass
Membrane support	SS screen with PTFE gasket	Sintered glass
Clamp	Aluminum	Aluminum
Filtration adaptor	PP	PP
Storage bottle	Borosilicate glass	Borosilicate glass

Specifications

Funnel capacity	1000 mL	1000 mL
Bottle capacity	5000 mL	5000 mL
Filter diameter	90 mm	90 mm
Effective filtration area	45.5 cm ²	45.5 cm ²
Hose barb	ID4 ~ ID8	ID4 ~ ID8

* The bottle withstands nearly full vacuum for use in vacuum filtration.



Ordering Information

VF 15, 90 mm Glass Filtration Set		167200-15
Glass Filter Holder (1000 mL)		167120-37
1	Glass funnel, 1000 mL	167210-10
2	Aluminum clamp, 90 mm	167240-02
3	SS support screen, 90 mm	167230-33-1
4	PTFE gasket	167230-43
5	Glass support base, 90 mm (Including No.8 silicone stopper)	167230-10
6	GL45 filtration adaptor	197000-65
7	Laboratory glass bottle, 5000 mL	197000-55
VF 16, 90 mm Glass Filtration Set		167200-16
Glass Filter Holder (1000 mL)		167120-38
1	Glass funnel, 1000 mL	167210-10
2	Aluminum clamp, 90 mm	167240-02
3	Sintered glass support base, 90 mm (Including No.8 silicone stopper)	167230-11
4	GL45 filtration adaptor	197000-65
5	Laboratory glass bottle, 5000 mL	197000-55