



Carefully check if the shipping carton is damaged before unpacking. Please check the items according to standard package list. If you have any question, please preserve serial no. & shipping carton and contact your dealer for quick solution.

Model	Stainless Steel Filter Holder	Stainless Steel Filtration Apparatus			Continuous Filter Holder
	SF 1 / 3 / 5	SF 10 / 30	SF 11	SF 52	SFC 142
Filter diameter	47 mm	47 mm	47 mm	47 mm	142 mm
1. Funnel	100 / 300 / 500 mL	100 / 300 mL	100 mL	500 mL	Cover
2. Membrane support	Yes	Yes	Yes	Yes	Yes
3. Support base	Yes	Yes	Yes	Yes	Yes
4. Silicone stopper	No. 8	No. 16	No. 8	No. 18	No. 8
Accessory	-	5. Overflow protection	5. Silicone fixing sucker	-	5. Tube & sinker
Vacuum bottle	-	6. 1200 ml PC bottle	6. 1000 ml receiver flask with drain	6. 2000 ml receiver flask with drain	-

*Note: (1) SF filter holders are made of SS316, able to be fast sterilized by flame, is much more effective than autoclave.
 (2) SF, Stainless steel funnel lid is optional.
 (3) SF support base, except for SFC 142, is also compatible with Pall 4870 (100mL) and 4871 (250mL) disposable funnels.*

Maintenance

1. Cleaning

- A. Disassemble the filter holder and vacuum bottle completely.
- B. Soak all parts in clean water. Avoid abrasive cleansers. If necessary, use a soft bristle brush or sponge to remove residues.
- C. Rinse all parts thoroughly. Final rinse should be done with distilled or deionized water.
- D. Store in a clean, dry place.

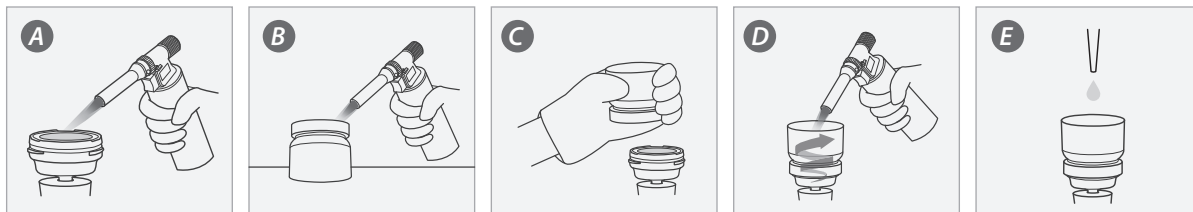
2. Sterilization

I. Autoclave

- A. Make sure to separate funnel lid and stopper from the filter holder when autoclaved.
- B. Autoclave at 121 - 123 °C (250 -253 °F) at 1.0 bar (100 kPa, 15 psi) for 15 - 20 min.

* The rubber drain hose of SF 11 and SF 52 is not autoclavable, please remove it before autoclave.

II. Flame Sterilization (apply only on stainless steel material filter holder)

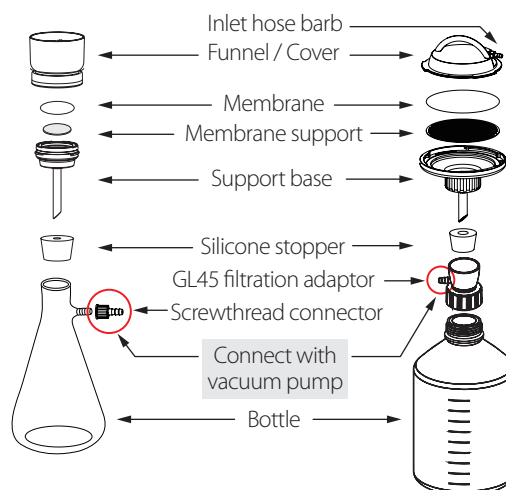


- A. Flame the support base and membrane support with lab burner.
- B. Put the funnel or cover upside down on the desk and flame it from the bottom.
- C. Wear THICK glove to lift up the heated funnel or cover and put it on the support base.
- D. Flame the interior wall of the funnel from bottom to top circularly. (skip this step when using SFC 142)
- E. Wait until the stainless steel filter holder cools down to the room temperature then start a filtration.

* Flame the filter holder until no obvious globule retain.

Usage Guide

1. Insert the filter holder into flask or bottle by silicone stopper.
2. Seat the membrane support in the support base and place the membrane on it.
3. Connect the funnel and cover to support base by twisting clockwise.
 - For SFC 142: Simply placing the cover on support base is sufficient for filtration.
4. Connect vacuum pump to flask's side arm or filtration adaptor, then pour the sample into the filter holder.
 - For SFC 142: Use tubing to connect the inlet hose barb to the sample for continuous filtration.
5. Power on the pump to start filtration.



Ordering Information

180100-10	SF 1, Stainless Steel Filter Holder (100 mL)
180100-30	SF 3, Stainless Steel Filter Holder (300 mL)
180100-50	SF 5, Stainless Steel Filter Holder (500 mL)
180200-S1	SFC 142, Continuous Filter Holder
180200-32	Stainless steel sinker
167300-08	Receiver Flask with Drain, 1000 mL
167200-13	Receiver Flask with Drain, 2000 mL
167110-16	Silicone stopper (No. 8)
167100-20	PALL A/ E Glass Fiber Membrane Filter, 47mm, 1 µm, 100/PK
167100-52-1	Whatman ME 25 (MCE) membrane, 47 mm, 0.45 µm, 100/PK
201PAL60305	PALL Supor™ PES membrane disc filters, 142 mm, 0.2 µm, tabbed, 25/PK
201PAL66604	PALL Nylaflo™ Nylon membrane disc filters, 142 mm, 0.2 µm, 25/PK
201PES-142-022-50	RONE PES membrane, 142 mm, 0.2 µm, 50/PK
201NY-142-022-50	RONE Nylon membrane, 142 mm, 0.2 µm, 50/PK

180100-11	100 mL Stainless steel lid
180100-13	300 mL / 500 mL Stainless steel lid
180100-31	Stainless steel support screen, 47 mm
180200-31	Stainless steel support screen, 142 mm
180300-68	Silicone tube Ø 8 x 14 mm, 200 cm
197000-69 / 70	Laboratory glass bottle, 10 L / 20 L
197100-65	GL45 filtration adaptor
167110-16-1	Silicone stopper (No. 8) for SFC 142