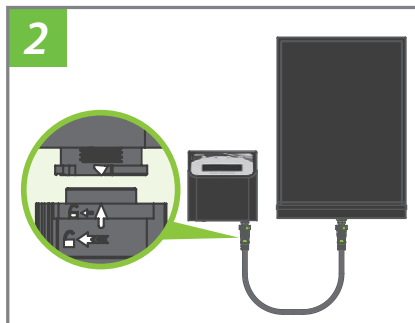


How to use :

◆ Mars Graphite Heating System

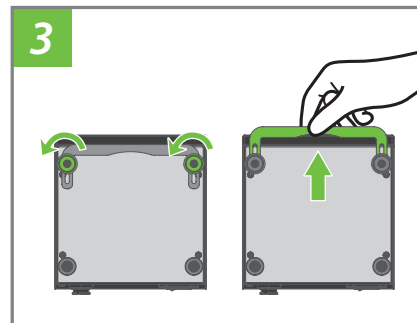


Install the Mars Graphite Hotplate in a functional fume hood.



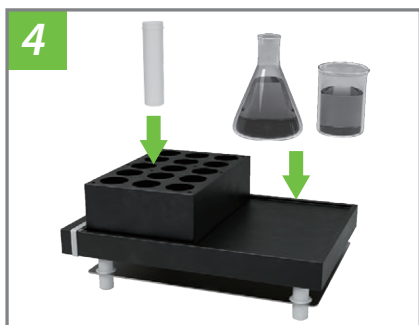
Connect the hotplate and controller together by plug-in cable and connect controller to power supply.

- ◆ Do NOT bundle the cable.
- ◆ Please align the arrows on both side of plug-in cable and insert it.



Loose the front pads, pull out wall-mounted accessory and hang the controller outside of the fume hood.

- ◆ Controller is designed for both wall-mounted and desktop.
- ◆ 3M 17004 adhesive hook is recommended.



Choose the heating system by digestion vessels:

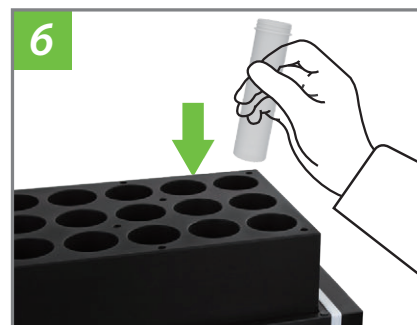
(1) hotplate or (2) hotblock

- ◆ Please assemble and change the block(s) at room temperature.

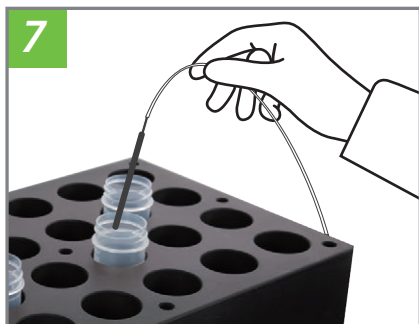


Switch on the controller, select a program or modify the parameters. Press ►/■ to preheat after setting is complete.

- ◆ Please refer to Parameter Setting for modification.

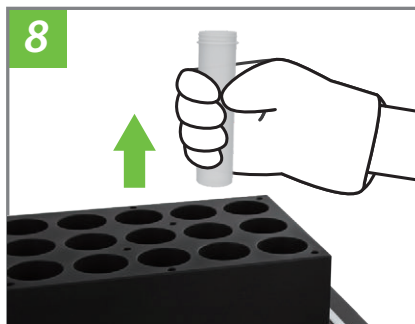


Put the samples in the preheated graphite heating system.



Connect the PTFE temperature sensor to connector if needed. Insert it into sample to observe the liquid temperature.

- ◆ If no sensor is connected, TE= --- is displayed.



The instrument will stop heating while end of countdown timer. Wear THICK gloves to immediately remove the samples or let the samples cool to room temperature for subsequent experiments.

- ◆ If 00:00 is set, heating should be stopped by pressing ►/■.



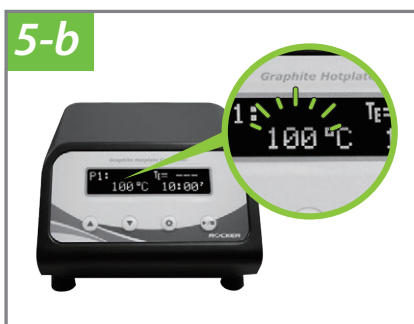
After cooling to room temperature, clean surface with damp cloth or mild soap.

How to use :

◆ Parameter Setting



Press ▲ / ▼ to select a program, then modify the parameters by pressing ⚙.



Press ▲ / ▼ to modify the flash figure, press ⚙ to others parameter setting.

- ◆ Setting cycle as temp., hour, minute.
- ◆ Timer is displayed as hh:mm, 00 : 00 indicates continuous heating.



Press ► / ■ to save the setting after setting is complete.



178320-22	Mars 320, Graphite Hotplate, AC220V, 50/60Hz
178430-22	Mars 430, Graphite Hotplate, AC220V, 50/60Hz
178200-45	PTFE-Coated Temperature Sensor

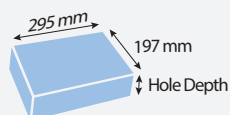


PP Glass PTFE

◆ Digestion Tube

	Tube Volume		
	15 ml	50 ml	100 ml
PP	178200-15-PP	178200-50-PP	178200-100-PP
Borosilicate Glass	178200-15	178200-50	178200-100
PTFE	178200-15-PTFE	178200-50-PTFE	178200-100-PTFE

* Max. Operating Temperature • PP: 130°C • Glass / PTFE: 200 °C



◆ Graphite Block (L x W): 295 x 197 mm

	Hole Diameter	Hole Depth	Max. Capacity	Applicable Tube
178200-07	16.5 mm	45 mm	70 well	φ 16 mm COD tube
178200-08	20.5 mm	55 mm	54 well	φ 20 mm COD tube
178200-09	25.5 mm	70 mm	40 well	φ 25 mm COD tube
178200-10	19 mm	90 mm	54 well	15 ml digestion tube, φ 18 mm tube
178200-11	32 mm	90 mm	24 well	50 ml digestion tube, φ 30 mm tube
178200-12	47 mm	90 mm	15 well	100 ml digestion tube

Rocker Scientific Co., Ltd.

Tel: +886-2-26033311 Fax: +886-2-26036622 E-mail: export@rocker.com.tw <https://www.rocker.com.tw>